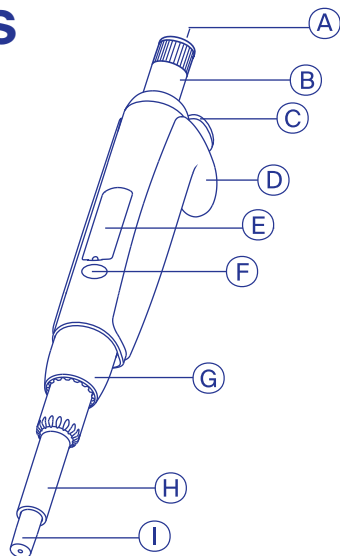


Quick Guide

Acura® manual 826XS



- A** Smartie cap **B** Plunger button **C** Ejector button
D Finger rest **E** Display window **F** Swift-set calibration system
G Ejector nut **H** Ejector screw **I** Nozzle

| Related items | Packaging | Cat. No. |
|--|-----------|-----------|
| Twister™ universal work station for 6 single-channel pipettes X = G - green / B - blue / Y - yellow / Q - grey / R - red / O - orange / W - white | 1 / pk | 320.336X |
| Work station for 3 multi- or single-channel pipettes | 1 / pk | 320.340 |
| Shelf pipette holder 332 for 2 instruments (transparent blue) | 1 / pk | 320.332 |
| Protective calibration seal stickers | 25 / bag | 1.825.025 |
| Smartie cap (assorted colours) | 14 / bag | 1.825.700 |

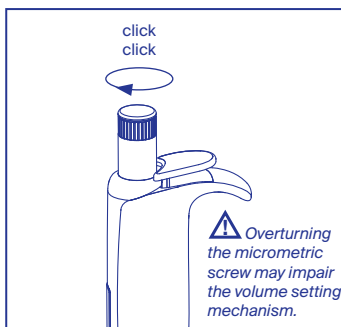


Package contents Pipette, silicone grease tube, tip samples, QC certificate, Quick Guide.

⚠ Safety precautions

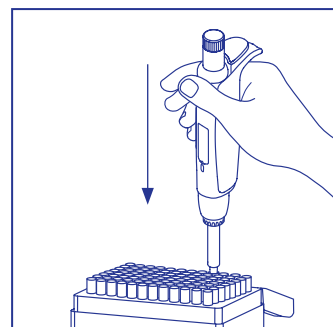
- Read carefully and observe manufacturer's instructions and guidelines.
- Refer to and follow regulations about handling of potentially hazardous reagents.
- Before use, check instrument for good working conditions.
- Do not use harsh chemicals (such as acetone) to clean instrument.
- Mind possible hand fatigue during serial pipetting and its medical consequences (such as repetitive strain injuries, RSI)

Step-by-step instructions



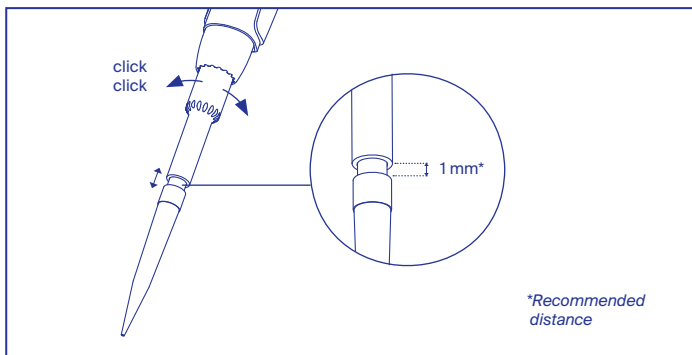
Volume setting

Rotate plunger button (B) clockwise to decrease, anti-clockwise to increase volume.



Tip fitting

Hold instrument vertically and fit tip by pressing. Do not rotate or hit repeatedly when fitting tip.



Tip ejector adjustment Justip™

Qualitix® tips are recommended but other brands can be fitted as well. Use Justip™ to move the tip ejector up or down to adapt to tips.

Most common troubleshooting

| Observation | Possible cause | Solution |
|-------------------------------------|------------------------------------|--|
| Tips not fitting the nozzle | Inadequate position of tip ejector | Adjust position of Justip™ tip ejector |
| | Inadequate tips | Use Qualitix® tips or other compatible tips |
| Plunger sticking or dragging | Dirty plunger | Disassemble and clean plunger, grease if necessary |
| Liquid not aspirated | Dry residues block pipette nozzle | Disassemble and clean |

Scan to access
operating
instructions



EN / DE / FR



IT / ES / PT